



SOCIOLOGUISTICS

symposium twenty two

CROSSING BORDERS: SOUTH, NORTH, EAST, WEST

SPONSORSHIP AND TRADE EXHIBITION OPPORTUNITIES

WEDNESDAY 27 JUNE – SATURDAY 30 JUNE 2018
OWEN G GLENN BUILDING, UNIVERSITY OF AUCKLAND,
AOTEAROA/NEW ZEALAND

www.ss22.ac.nz



Welcome



Dear Colleagues and Friends

Tēnā koutou katoa

As you know, the biennial Sociolinguistics Symposium series is the premier international sociolinguistics symposium, attracting sociolinguistic scholars from across the globe.

In 2018, it will be held for the first time outside of Europe and in the Southern Hemisphere. The Organising Committee is thus pleased to invite you to support and participate in the **Sociolinguistics Symposium 22 (SS22)**, jointly hosted by the Faculty of Education and Social Work and the Faculty of Arts, University of Auckland, Aotearoa/New Zealand.

The symposium is to be held **Wednesday 27 – Saturday 30 June 2018 in the Owen G Glenn Building, University of Auckland**. Further details of the symposium can be found on the symposium website: www.ss22.ac.nz

The symposium theme will be: **Crossing borders: South, North, East, West**

Our intention is to focus on the interconnections (and fissures) across disciplinary, epistemological and geographical spaces in sociolinguistics at the present time and in relation to (re)situating current key developments, such as the “multilingual turn” and “linguistic superdiversity”.

This theme builds on the latest developments in sociolinguistics, while also being of key concern in the Asia/Pacific region (an area where the Sociolinguistics Symposium would benefit from further expansion).

We believe that SS22 will be pivotal to the ongoing development of the field of sociolinguistics – building on the strong European base of the Sociolinguistics Symposium series, while concurrently expanding/strengthening its presence and influence in Asia and the Pacific.

We look forward greatly to your participation at Sociolinguistics Symposium 22.

Nāku noa, nā

Yours sincerely

Professor Stephen May

Professor Gary Barkhuizen

Professor Stephen May
Symposium Co-convenor and Chair
Te Puna Wānanga (the School of Māori Education)
Faculty of Education and Social Work
University of Auckland
(on behalf of the Organising Committee)

Professor Gary Barkhuizen
Symposium Co-convenor
School of Cultures, Languages and Linguistics
Faculty of Arts
University of Auckland



Programme

The symposium programme will include internationally renowned plenary speakers who will inspire, provoke and challenge delegates, such as:

Professor Anna De Fina
Georgetown University

Professor Rita Kothari
Indian Institute of Technology Gandhinagar

Professor Li Wei
University College London

Professor Tope Omoniyi
University of Roehampton

Professor Alastair Pennycook
University of Technology Sydney

Venue

The symposium will be held at the **University of Auckland Business School** in the **Owen G Glenn Building**, 12 Grafton Rd, Auckland, New Zealand. The University is a vibrant and picturesque campus located in the heart of Auckland's CBD and only a 40 minute drive from Auckland International Airport. Entry to the symposium is via the main doors on Grafton Road.

For a map of the University of Auckland's City Campus, and the location of the Owen G Glenn Building visit www.auckland.ac.nz/uaa/about/uaa/campuses/home.cfm

Your involvement

We offer you the opportunity to participate as a sponsor, exhibitor or both. The various options are detailed in this booklet. We have structured sponsorship opportunities so that you will receive the maximum possible exposure and benefit from your sponsorship. We are happy to discuss other sponsorship options if those outlined do not fit your needs.

In addition to your sponsorship of the specified event or activity, all sponsors will be acknowledged in the symposium promotional materials (if registered prior to their publication) at the venue and throughout the symposium.

Major sponsors have high profile acknowledgement. If you are interested in being a major sponsor, please approach the symposium organiser.

Once you have decided on your level of involvement please complete the Sponsorship Application Form and return to the symposium organiser by email to sponsorship@paardekooper.nz or phone +64 4 562 8259 to arrange your requirements and make your bookings.

Thank you for your consideration.



SPONSORSHIP PACKAGES

GOLD

\$5,000 + GST

you will receive the following benefits

Recognition as a Gold Sponsor of the symposium

Acknowledgement in the opening and closing of the symposium

Sponsor logo in the symposium handbook

Sponsor logo on the symposium website with link to company website

Sponsor logo on the symposium holding slide shown between sessions

A full page black and white advertisement in the symposium handbook

One trade exhibition stand Size A (refer to Trade Exhibition Section)

One satchel insert in the symposium satchel (maximum 10 pages)

Two complimentary full symposium registrations

SILVER

\$3,000 + GST

you will receive the following benefits

Recognition as a Silver Sponsor of the symposium

Sponsor logo in the symposium handbook

Sponsor logo on the symposium website with link to company website

Sponsor logo on the symposium holding slide shown between sessions

A half page black and white advertisement in the symposium handbook

One trade exhibition stand (size B) (refer to Trade Exhibition Section)

One satchel insert in the symposium satchel (single page)

One complimentary full symposium registration

SPONSORSHIP OPPORTUNITIES



Below is the list of sponsorship opportunities and costs. If these sponsorship opportunities fall outside your requirements or you have specific requirements, we will be happy to have further discussions with you.

All figures are in \$NZ and do not include GST

<p>Symposium Satchel The symposium satchel will be printed in one colour with the sponsor's logo, as well as with the symposium logo.</p>	\$5,000
<p>Symposium Handbook The sponsor's logo will be printed in a prime position the symposium handbook, and the sponsor will be acknowledged on the contents page. You also receive an A4 full colour advertising space on the back cover of the handbook.</p>	\$5,000
<p>Social Functions – Welcome Function and Symposium Dinner The sponsoring organisation will be acknowledged as the sponsor of the specific function in all symposium publications. The sponsoring company will have brand visibility at the venue of the function being sponsored and an opportunity to have a 5 minute speaking slot at the sponsored function. There are two social functions to select from: 1. Welcome Function 2. symposium Dinner</p>	\$5,000 per function
<p>Symposium App The symposium app will be branded with the sponsor's logo, alongside the symposium branding.</p>	\$3,500
<p>Symposium USB The symposium USB pre-loaded with presenter abstracts and sponsor advert will be branded with the sponsor's logo.</p>	\$3,500
<p>Plenary Speakers Sponsorship is available for plenary speakers. Sponsoring organisations will be acknowledged in the symposium programme and by the person introducing the presenters. The sponsoring company will be able to exhibit banners or other promotional material in the symposium room for that session. To discuss further details about sponsoring a plenary speaker, please contact the symposium Organiser on +64 4 562 8259.</p>	\$3,000 per speaker
<p>Symposium Lanyard The symposium lanyard for delegate name badges will be branded with the sponsor's logo in a one colour print.</p>	\$3,000
<p>Lunch (3 available) The sponsor of each lunch will receive recognition in the symposium session prior to the relevant break as well as acknowledgement in the symposium programme and in the handbook. The sponsor will have brand visibility during the sponsored catered break.</p>	\$1,500 each
<p>Pocket Programme The pocket programme inserted into the name badge pocket will be branded with the sponsor's logo.</p>	\$2,000
<p>Morning Tea and Afternoon Tea (3 of each available) The sponsor of each catered break will receive recognition in the symposium session prior to the relevant break as well as acknowledgement in the symposium programme and in the handbook. The sponsor will have brand visibility during the sponsored catered break.</p>	\$500 each
<p>Full Page Advertising in the Symposium Handbook The symposium handbook will be provided to all delegates and is a valuable reference long after the symposium. The handbook will be A4 and all adverts will be printed in black and white.</p>	\$750
<p>Note Pads The sponsoring organisation will be the official sponsor of the symposium note pad by supplying branded note pads for inclusion in the symposium satchels.</p>	\$500 plus product
<p>Pens The sponsoring organisation will be the official sponsor of the symposium pen by supplying branded pens for inclusion in the symposium satchels.</p>	\$500 plus product
<p>Satchel Inserts The inclusion of one item of your promotional material in the symposium satchel. As a guideline, satchel inserts should be no bigger than A4 size.</p>	\$500 each
<p>Half Page Advertising in the Symposium Handbook The symposium handbook will be provided to all delegates and is a valuable reference long after the symposium. The handbook will be A4 and all adverts will be printed in black and white.</p>	\$450

Trade Exhibition

A trade exhibition will be held in conjunction with SS22. In order to provide you with the optimum exposure to delegates, the exhibition will be located in the main hub of the symposium venue at the Owen G Glenn building.

TRADE EXHIBITION BOOTHS

There will be two booth sizes available for you to select from:

- Size A – 3.6 m wide x 1.2m deep x 2.3m high
- Size B – 2.4 m wide x 1.2m deep x 2.3m high

You may book adjoining booths to create a larger exhibition area.

Each booth will include:

* Velcro receptive display panels. The basic set-up includes side and back partitioned walls. The configuration of individual stands may vary.

- 1 x 10 AMP power supply and a multi-box
- 2 x 100 watt spot lights
- A trestle table, tablecloth and chair
- Installation and removal of basic set-up

Any additional requirements will be the responsibility of exhibitors and at their own cost.

TRADE ATTENDANTS

Additional trade attendants - \$200 + GST

The trade exhibition area floor map shows the sites of the booths. Trade exhibition booths will be allocated on a first-come, first-served basis.

NB: Your position once chosen, will not be changed; however, your booth number may change. We will confirm your booth number closer to the symposium dates to allow you to print material with your booth details.

Lunches, coffee and morning & afternoon tea breaks will be held in this area.

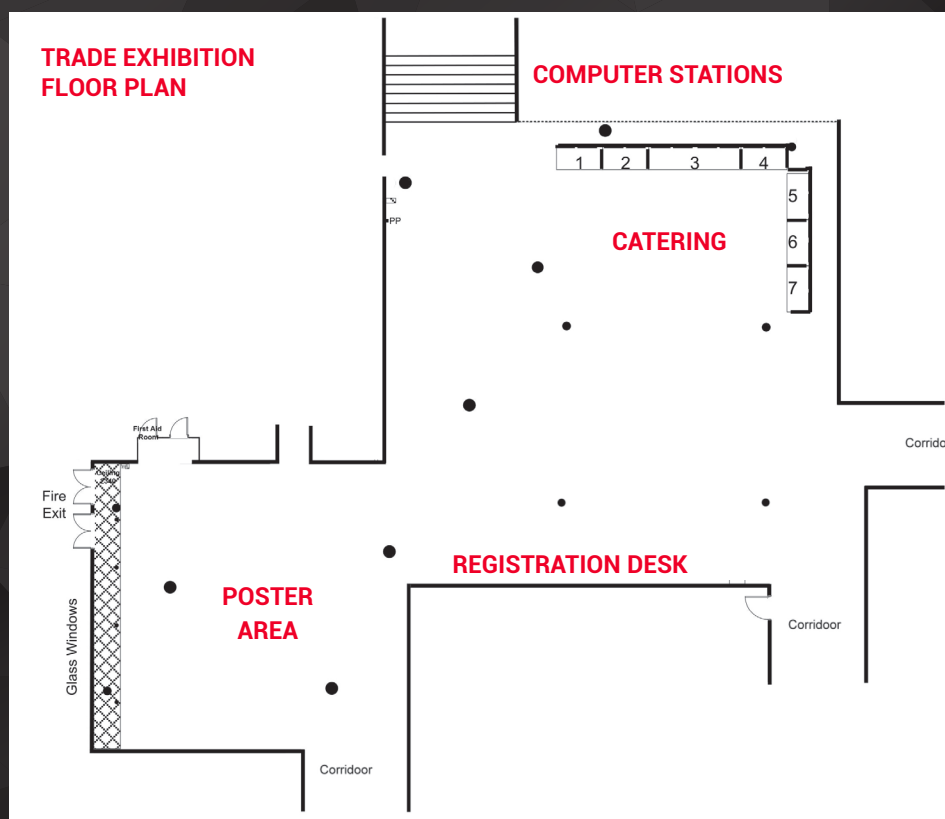
To maintain the integrity of the symposium, the exhibits must not be taken down until after the closing address of the symposium.

COSTS

The charge for booths will be:

- * Size A - \$2,000 + GST each and includes two complimentary attendants
- * Size B - \$1,250 + GST each and includes one complimentary attendant

Complimentary attendant registrations allow access to the exhibition area, welcome function, morning tea, lunch and afternoon tea only. It does not give access to the symposium sessions.



SOCIOLINGUISTICS

symposium twenty two
CROSSING BORDERS: SOUTH, NORTH, EAST, WEST



Organisation name _____

Contact person _____

Position within organisation _____

Business address _____

Telephone _____ Mobile _____

Email _____

Sponsorship request:

1 _____ \$ _____

2 _____ \$ _____

3 _____ \$ _____

Trade exhibition request:

Size A \$2,000 + GST 3.6m wide x 1.2m deep x 2.3m high

Size B \$1,250 + GST 2.4m wide x 1.2m deep x 2.3m high

Preferred site number _____ Preferred second choice _____

Special requirements _____

Upon receipt of your signed application form, the symposium organiser will forward an email and invoice to confirm your participation. If you have applied for an exhibition booth, your booth site number will be confirmed on your invoice.

Signed _____ Date _____

Cancellation Policy

All cancellations must be made in writing by email to the symposium organiser. Cancellations received on or **before 5 pm, Tuesday, 27 March 2018** will receive a refund less an administration fee of \$200+GST.

All cancellations made **after 5 pm, Tuesday, 27 March 2018** will be liable for full costs of their commitment. In the event of the symposium being cancelled, a full refund less a \$200+GST administration fee will be made.

To secure your sponsorship please contact the symposium organiser:

Paardekooper and Associates

PO Box 41002, Eastbourne, Lower Hutt 5047, New Zealand

Phone: + 64 4 562 8259 Email: sponsorship@paardekooper.nz

www.ss22.ac.nz

Act now to secure your first choice!

Paardekooper
conferences | events | team building